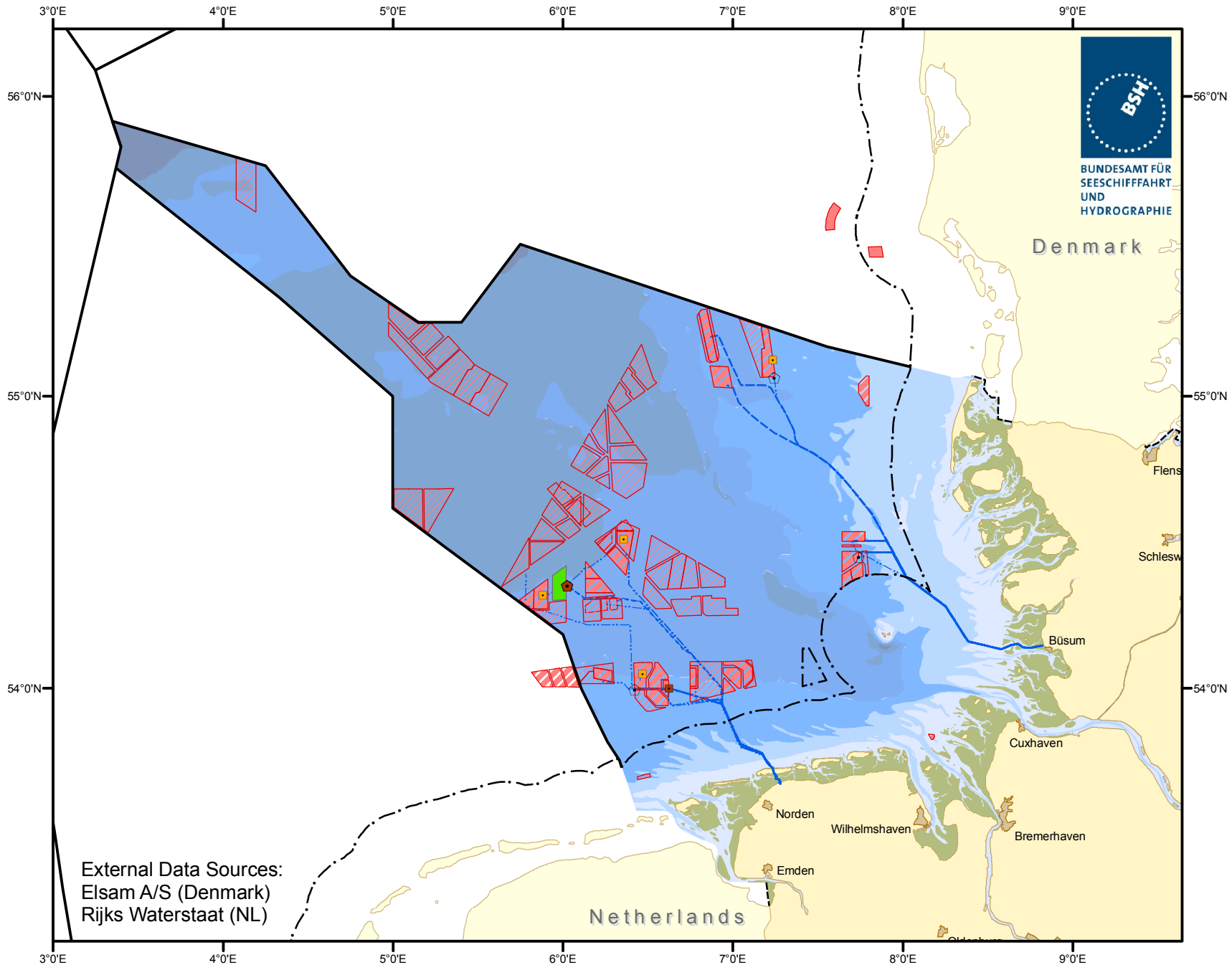


North Sea: Offshore Windfarms



- Offshore Windfarms**
- In Use
 - Under Construction
 - ▤ Approved
 - ▨ Planned
- Platform Windfarm**
- ◆ E-Converter, under construction
 - E-Transformer, planned
 - E-Transformer, in use
 - E-Converter, planned
- Cable Connections**
- in Use
 - Under Construction
 - Approved
 - Planned
- Boundaries**
- Continental Shelf/EEZ
 - Territorial Waters/12 nm Zone
 - International Boundary

External Data Sources:
 Elsam A/S (Denmark)
 Rijkswaterstaat (NL)

Geodetic Datum: WGS 84
 Map Projection: Mercator (54°N)
 BSH / M5 - 28.04.2010